



aria[®]

style without compromise

The first and original

Formica Group invented high pressure laminates in 1913. Pioneers by definition, our iconic Formica® brand represents the quintessence of laminates.

Inspired by life

Laminates entered people's daily lives and made modernity dreams come true and accessible. Similarly, the demand for multifunctional, practical and durable designed surfaces is a constant inspiration for our Formica® Collections. At rest, at leisure, at work.

Evolving with the times

The way people live, work and play continuously changes. Formica Group keep pace with these evolving times through constant innovation, reflecting global trends and responding to ever changing needs and habits. The true original, still surfacing the world.



Style without compromise

Engineered work surfaces with natural beauty – the Formica Aria® range of worktops and accessories present captivating surface solutions, that combine the visual beauty of natural and engineered stone, with cutting edge surface technology.

From the timeless allure of dramatic marble veining to the serene charm of calming stones in a palette of sophisticated neutrals, the range offers the perfect choice of surface designs to elevate your kitchen.

Crafted as a single slab, Formica Aria provides outstanding durability and performance without the requirement of costly or complex installation, which can be associated with stone-based materials.

We believe your kitchen worktop should make a statement, be hard wearing and require little maintenance. Formica Aria has been specifically designed to give the sleek and contemporary kitchen you've always wanted, providing outstanding value, but without compromising on looks or durability.



Aura Marble

12mm white core worktop and breakfast bar with matching splashback* in Satin NDF finish

**Matching splashbacks are 6mm thickness*





Marmara Shade

20mm grey core worktop and breakfast bar with an upstand in Monolith finish

Properties

From its inception, Formica Aria® has been engineered as a high performance alternative to natural and engineered stone surfaces, guaranteeing uncompromised excellence in aesthetic appeal, finish, quality, and durability of work surfaces.

Formica Aria offers the following properties:

Durable

The solid one-piece construction ensures exceptional resistance to both impact and abrasion, providing surface solutions that stand the test of time and remain beautiful for years to come.

Non-porous

Water resistant, non-porous surface properties enable greater design freedom.

Hygienic and easy to maintain

Liquids are unable to penetrate the surface making it easy to wipe away and clean spillages.

Simple installation

Formica Aria worktops and accessories offer the convenience of onsite cutting and installation, without the need for specialist off-site templating or tools associated with stone and engineered stone alternatives.





Inspiration and style

Formica Aria® worktops and accessories will transform your kitchen into the living space you have always dreamed of by effortlessly blending the sleek aesthetics of a solid colour core with stylish surface designs and surface textures.

Contemporary work surfaces

Available in two thicknesses: an ultra slim 12mm for a sleek modern design statement and a timeless 20mm thickness that evokes the elegance of a sophisticated marble or engineered stone.

Making it personal

Formica Aria worktops enhance both traditional and contemporary kitchen styles, offering the flexibility to pair them with recessed handle rails for seamless, handle-less designs. Meticulously crafted worktops and breakfast bars have been produced in optimised sizes, allowing for personalised touches such as overhangs, curves, or flush fittings to suit your individual kitchen preferences.

Unlimited Possibilities

Combining a solid colour core and water-resistant surface, Formica Aria worktops and accessories open the door to unlimited design possibilities. Elevate your kitchen with sleek lines, cascading waterfall effects, and drainage grooves that reveal a complementary coloured core.

Beautiful look, contemporary feel

Inspired by an array of natural materials, the collection offers a diverse marble and stone palette, ranging from white natural hues with warm toned veining to monochrome greys. Each decor seamlessly pairs with a distinct surface texture, ensuring a perfect union of style and texture.

Introducing Monolith, an exclusive new large scale surface texture, expertly crafted to combine the most striking elements of two natural stones.

Timeless designs

Each combination of stone, marble and granite effect surfaces are paired harmoniously with white, grey or black cores to provide a beautiful natural aesthetic. Inspired by materials sourced from around the world, the 15 decors within the collection range from bold industrial looks of concrete, slate and bronze patina to the luxurious drama of large scale marble. All Formica Aria products are proudly manufactured in the UK.

Calacatta Marble

12mm white core worktop and breakfast bar with matching splashback* in Satin NDF finish

**Matching splashbacks are 6mm thickness*





Graphite Monolith

20mm true black core worktop and breakfast bar with matching splashback* in Monolith finish

**Matching splashbacks are 6mm thickness*







Elemental Concrete

20mm grey core worktop and breakfast bar with matching splashback* in Scovato finish

**Matching splashbacks are 6mm thickness*





Calacatta Cava

12mm white core worktop and 20mm breakfast bar
with matching splashback* in Satin NDF finish

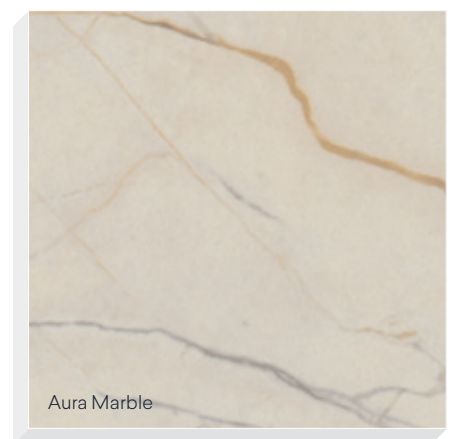
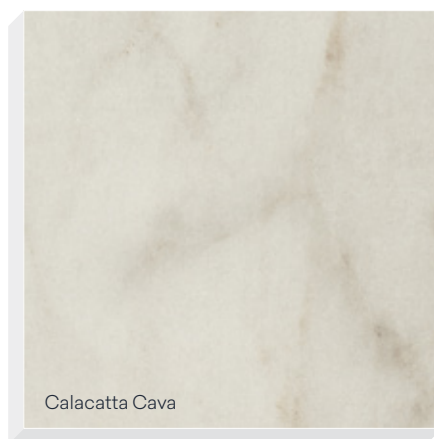
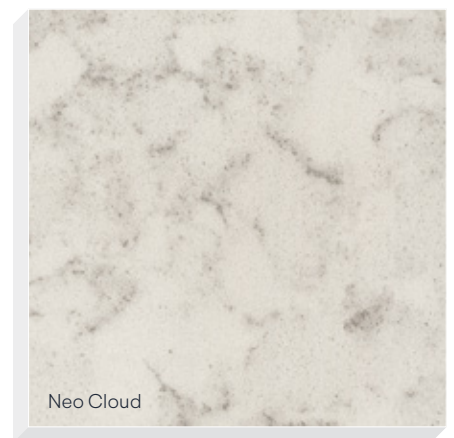
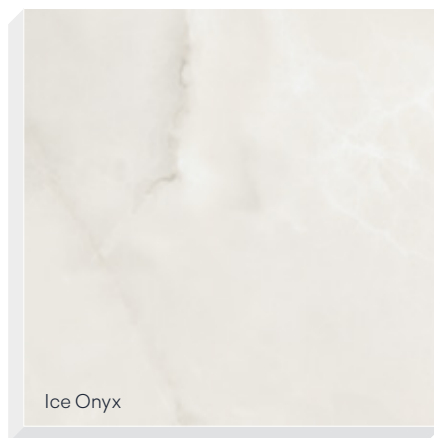
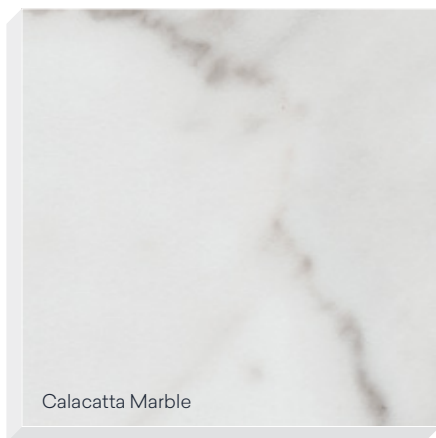
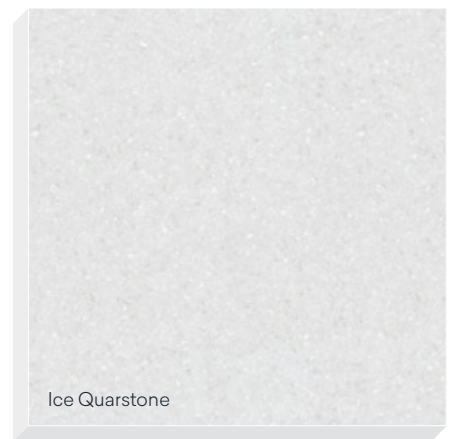
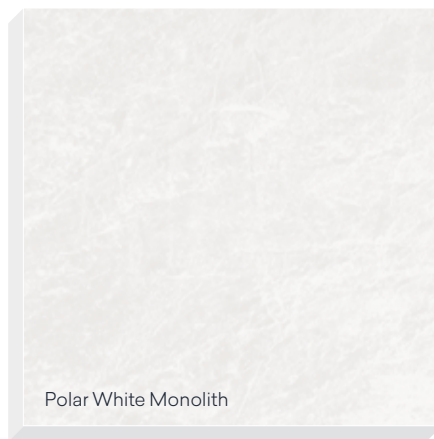
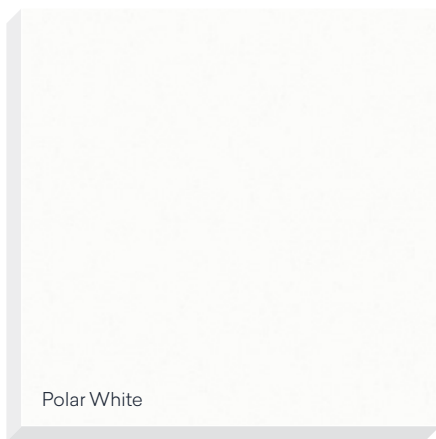
**Matching splashbacks are 6mm thickness*

Timeless Whites

Effortlessly enhance your kitchen space with the exquisite range of timeless whites.

The selection includes a diverse array of white tones, that make a lasting impression on their own or in combination with other materials, such as warm woods and cool concretes.

From classic elegance to contemporary flair, the Formica Aria® white core range boasts an extensive choice of striking white marbles and engineered stone designs, that deliver refined simplicity or make an on trend bolder design statement.





Neo Cloud

20mm white core breakfast bar in Satin NDF finish

Calacatta Cava

20mm white core breakfast bar in Satin NDF finish









Ice Onyx

20mm white core worktop with
matching splashback* in Satin NDF finish

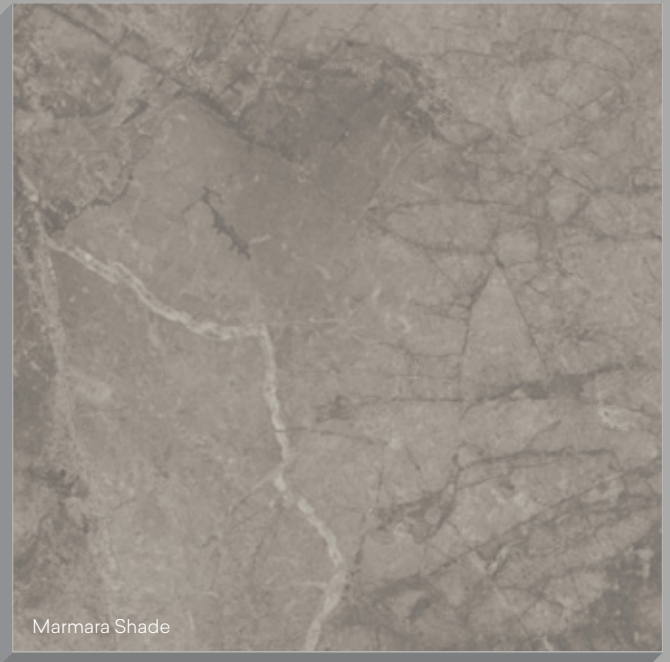
**Matching splashbacks are 6mm thickness*

Sophisticated Greys

Grey serves as a versatile neutral base, providing flexibility for pairing with bolder accents, while also offering nuanced shades that evoke a sense of tranquility.

Cool and warm grey marble, onyx and concrete decors are complemented by a harmonious mid grey core colour.

The Formica Aria® grey core range will instantly make a design statement, adding sophistication to your home.





Elemental Concrete

20mm grey core worktop in Scovato finish



Marmara Shade

20mm grey core worktop and breakfast bar with an upstand in Monolith finish

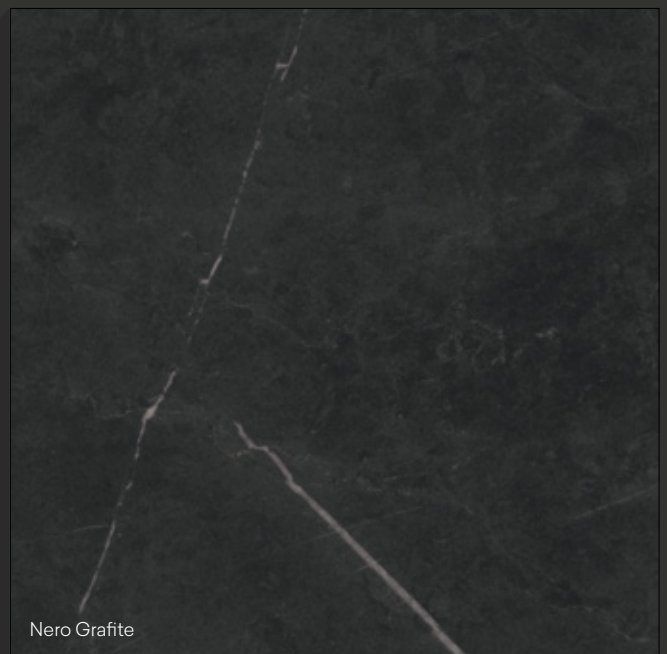


Elegant Blacks

While bold in nature, black worktops showcase remarkable versatility, capable of complementing a wide range of cabinet colours and materials.

This adaptability makes them an ideal choice for a myriad of design schemes, whether you prefer a sleek contemporary look or something more traditional.

The Formica Aria® black core range features four distinct decors, each with their own unique characteristics, from black veined marble to bronze patina.





Nero Grafite

12mm black core worktop
in Satin NDF finish

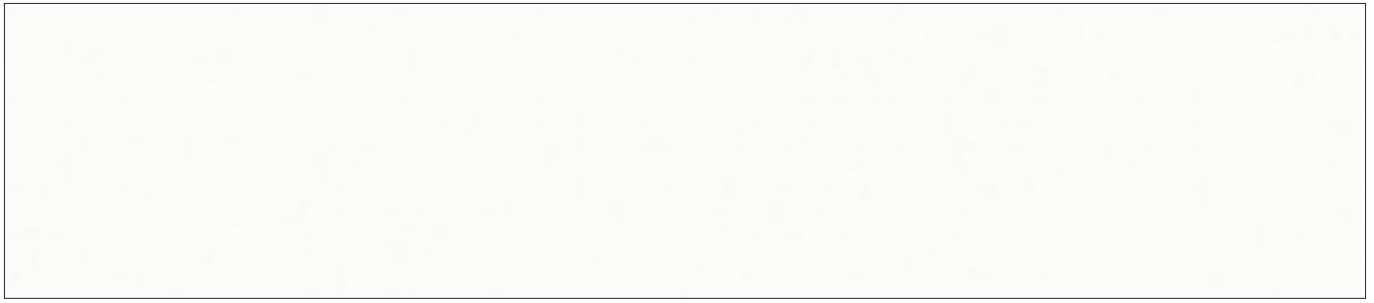




Graphite Monolith

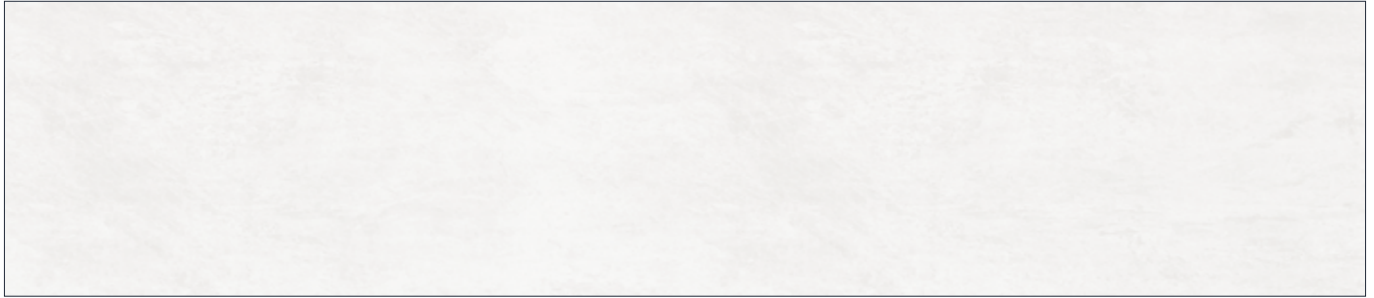
20mm true black core worktop and breakfast bar with matching splashback* in Monolith finish

**Matching splashbacks are 6mm thickness*



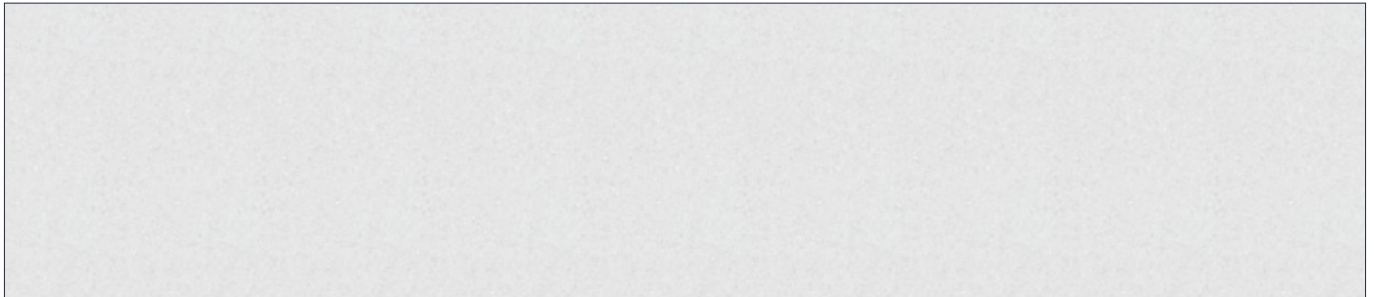
F2255 Polar White, Satin NDF

White Core



F2255 Polar White, Monolith

White Core



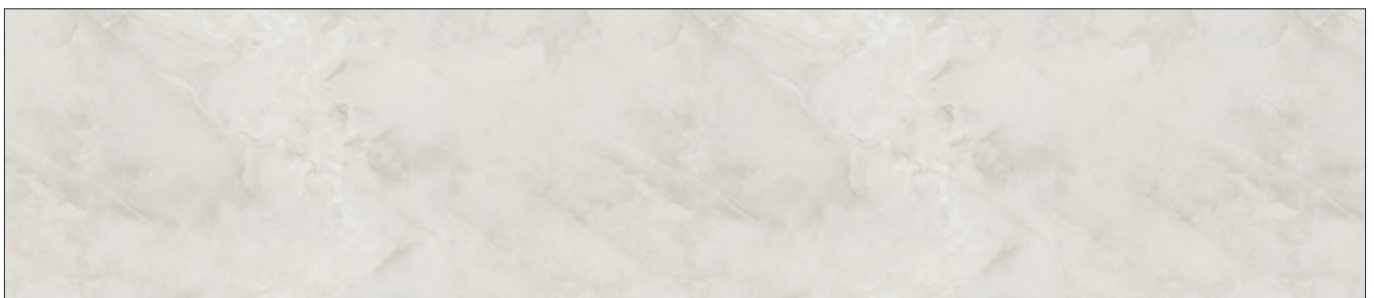
F5212 Ice Quarstone, Riverwash

White Core



F3460 Calacatta Marble, Satin NDF

White Core



F7408 Ice Onyx, Satin NDF

White Core



F6314 Neo Cloud, Satin NDF

White Core

Worktop full size view

Representative of a 3000x650mm worktop section



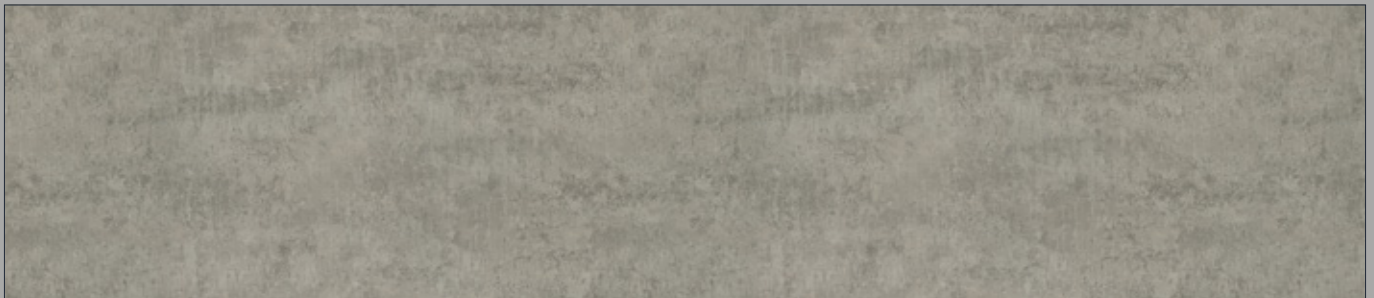
F5018 Calacatta Cava, Satin NDF

White Core



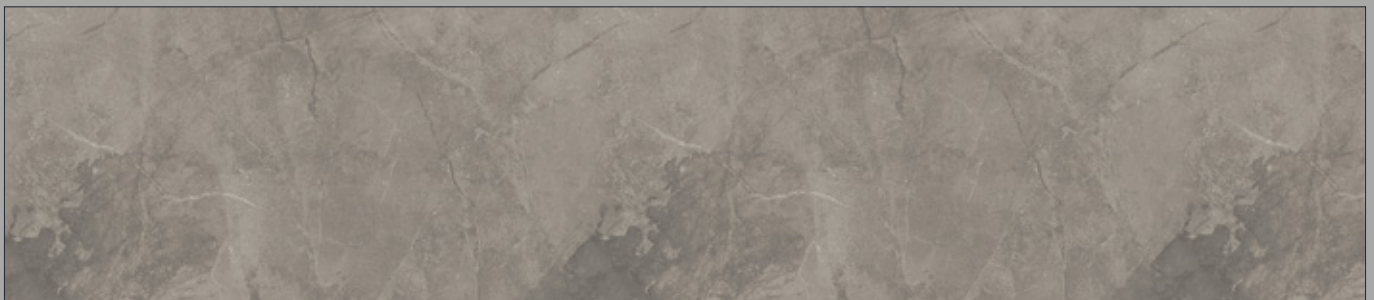
F9669 Aura Marble, Satin NDF

White Core



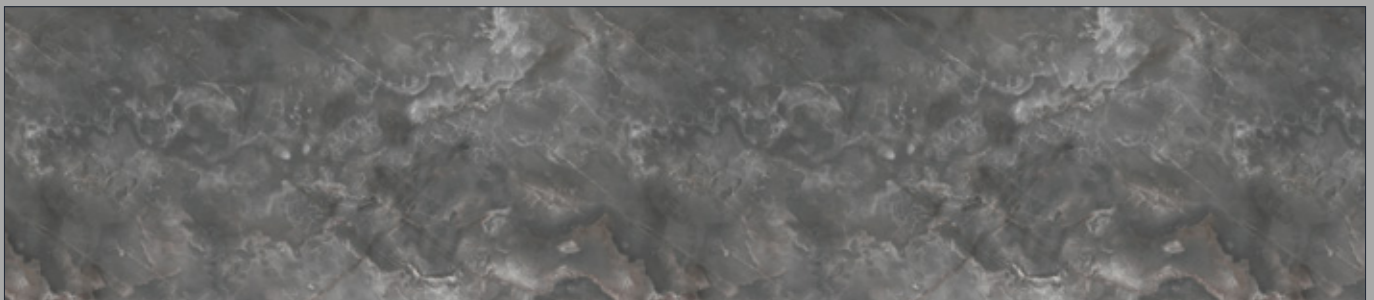
F8830 Elemental Concrete, Scovato

Grey Core



F5612 Marmara Shade, Monolith

Grey Core



F3710 Smoke Onyx, Satin NDF

Grey Core

Decors scans shown are representative of a typical worktop cut from a larger sheet, design may vary slightly based on section of sheet used.

Worktop full size view

Representative of a 3000x650mm worktop section



F3708 Burnished Coin, Scovato

True Black Core



F7837 Graphite, Monolith

True Black Core



F8833 Elemental Graphite, Scovato

True Black Core



F9485 Nero Grafite, Satin NDF

True Black Core

Decors scans shown are representative of a typical worktop cut from a larger sheet, design may vary slightly based on section of sheet used.



Burnished Coin

12mm true black core worktop
in Scovato finish

Surface textures



Monolith



Riverwash



Satin NDF



Scovato

Range to view



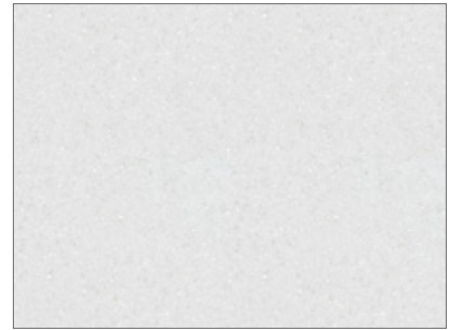
F2255
Polar White

White Core
Satin NDF



F2255
Polar White

White Core
Monolith



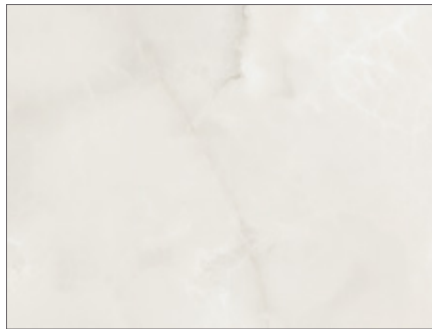
F5212
Ice Quarstone

White Core
Riverwash



F3460
Calacatta Marble

White Core
Satin NDF



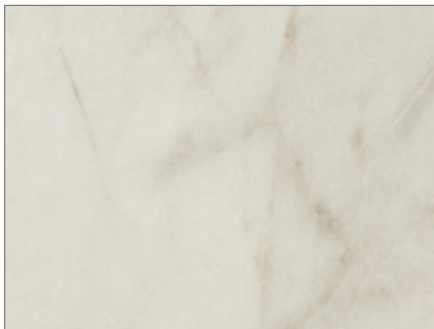
F7408
Ice Onyx

White Core
Satin NDF



F6314
Neo Cloud

White Core
Satin NDF



F5018
Calacatta Cava

White Core
Satin NDF



F9669
Aura Marble

White Core
Satin NDF



F8830
Elemental Concrete

Grey Core
Scovato



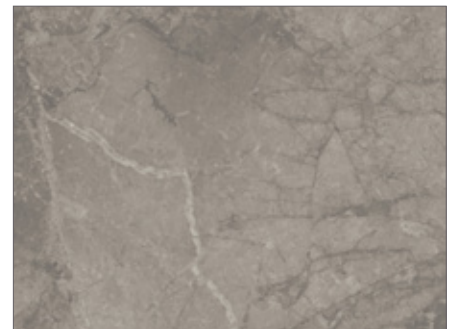
F3708
Burnished Coin

True Black Core
Scovato



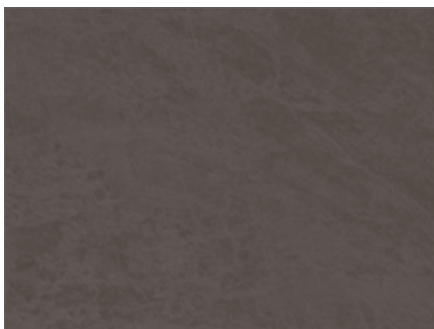
F3710
Smoke Onyx

Grey Core
Satin NDF



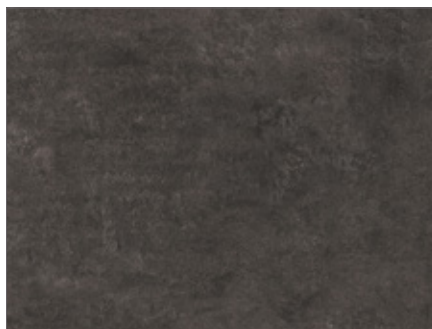
F5612
Marmara Shade

Grey Core
Monolith



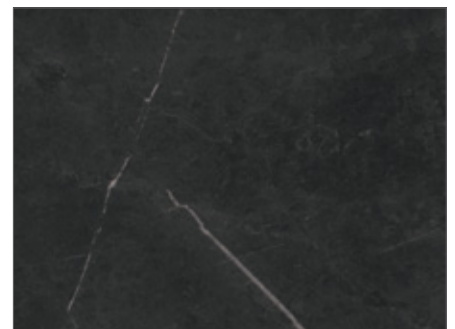
F7837
Graphite

True Black Core
Monolith



F8833
Elemental Graphite

True Black Core
Scovato



F9485
Nero Grafite

True Black Core
Satin NDF

Sizes & availability

Code	Decor	Texture	Core	Worktop		Breakfast Bar		Upstand	Splashback
				3600x650mm		3600x900mm	3050x900mm	3600x90mm	3600x600mm
				12mm	20mm	12mm	20mm	12mm	6mm
F2255	Polar White	Satin NDF	White	●	●	●	●	●	●
F2255	Polar White	Monolith	White	●	●	●	●	●	●
F3460	Calacatta Marble	Satin NDF	White	●	●	●	●	●	●
F5018	Calacatta Cava	Satin NDF	White	●	●	●	●	●	●
F5212	Ice Quarstone	Riverwash	White	●	●	●	●	●	●
F6314	Neo Cloud	Satin NDF	White	●	●	●	●	●	●
F7408	Ice Onyx	Satin NDF	White	●	●	●	●	●	●
F9669	Aura Marble	Satin NDF	White	●	●	●	●	●	●
F3710	Smoke Onyx	Satin NDF	Grey	●	●	●	●	●	●
F5612	Marmara Shade	Monolith	Grey	●	●	●	●	●	●
F8830	Elemental Concrete	Scovato	Grey	●	●	●	●	●	●
F3708	Burnished Coin	Scovato	True Black	●	●	●	●	●	●
F7837	Graphite	Monolith	True Black	●	●	●	●	●	●
F8833	Elemental Graphite	Scovato	True Black	●	●	●	●	●	●
F9485	Nero Grafite	Satin NDF	True Black	●	●	●	●	●	●

Quality assured

All Formica Aria® products are manufactured in accordance with British and European standards to ensure they meet exacting modern kitchen requirements. Specific features incorporated into the surface increase their resistance to heat, impact, moisture and scratching (excluding the low gloss Satin NDF finish).

Samples represent only a small area of an actual Formica Aria product, therefore colour and surface finish should be compatibility checked before your Formica Aria products are fitted, as claims cannot be accepted for re-fitting resulting from a mismatch of colour or surface finish.

Formica Aria products come with a 10 year limited warranty subject to conditions. An installation and maintenance guide is supplied with every worktop; this must be kept by the end user to validate any guarantees.

Ease of maintenance

Formica Aria products are very easy to maintain and clean. They simply require a regular wipe down with a moist cloth and mild detergent, then rinsed with warm water and the surface gently dried with a soft cloth. While our surface is resistant to many substances, our recommendation is to wipe up any spillages immediately and not leave them to stand for a prolonged period. Should you choose to incorporate under mounted sinks or drainage grooves into your worktop design, these edges and channels should be wiped down as instructed above on a daily basis to maintain their pristine look and appeal. As with any kitchen work surface, we advise not to place hot pans or oven dishes directly onto the surface. For full worktop installation and maintenance information, visit formica.info as the most up-to-date source of information.

UK manufacturing at its best

All Formica Aria products from this range are produced in the UK, benefitting from a heritage which spans decades and the expertise of a global leader in quality surfaces. The Formica Aria range, like all our other products, are manufactured using innovative techniques, leading technology and by knowledgeable experts, so you can be sure that it delivers and lives up to its reputation.



Polar White Monolith

20mm white core worktop with matching splashback* in Monolith finish

**Matching splashbacks are 6mm thickness*



